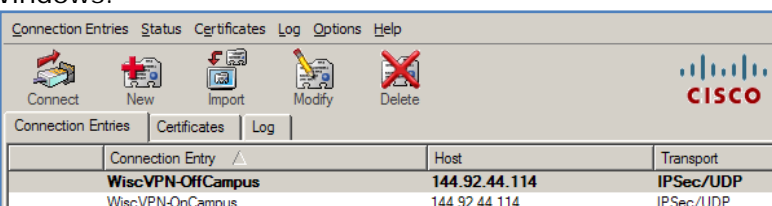


Accessing SciFinder Scholar from Off-Campus using WiscVPN-OnCampusStatic

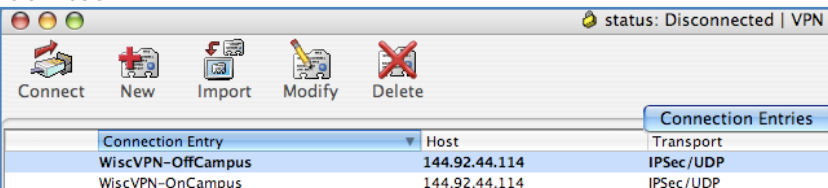
To use SciFinder Scholar from off-campus, users must connect via WiscVPN using a static IP address.

1. Reserve a WiscVPN static IP address at <http://www.doit.wisc.edu/network/vpn/static.asp>
2. Download WiscVPN from the Doit web site: <http://www.doit.wisc.edu/network/vpn/>
Your WiscVPN client profiles directory should have the **two** original profiles: WiscVPN-OffCampus.pcf and WiscVPN-OffCampus.pcf

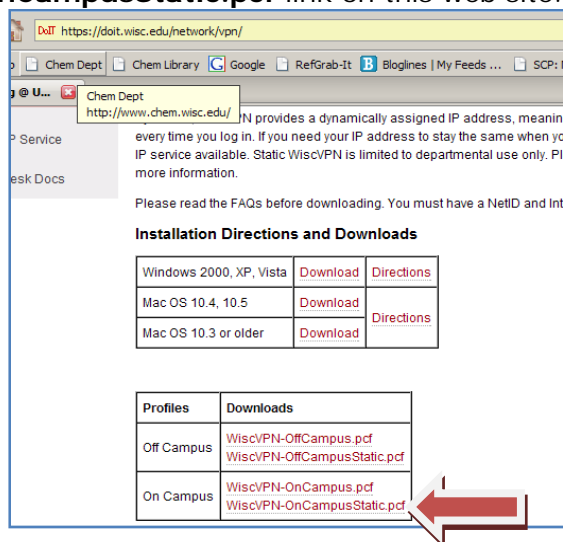
Windows:



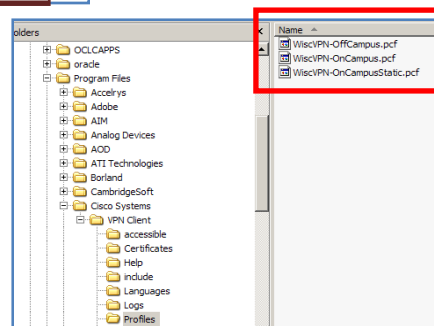
MacIntosh:



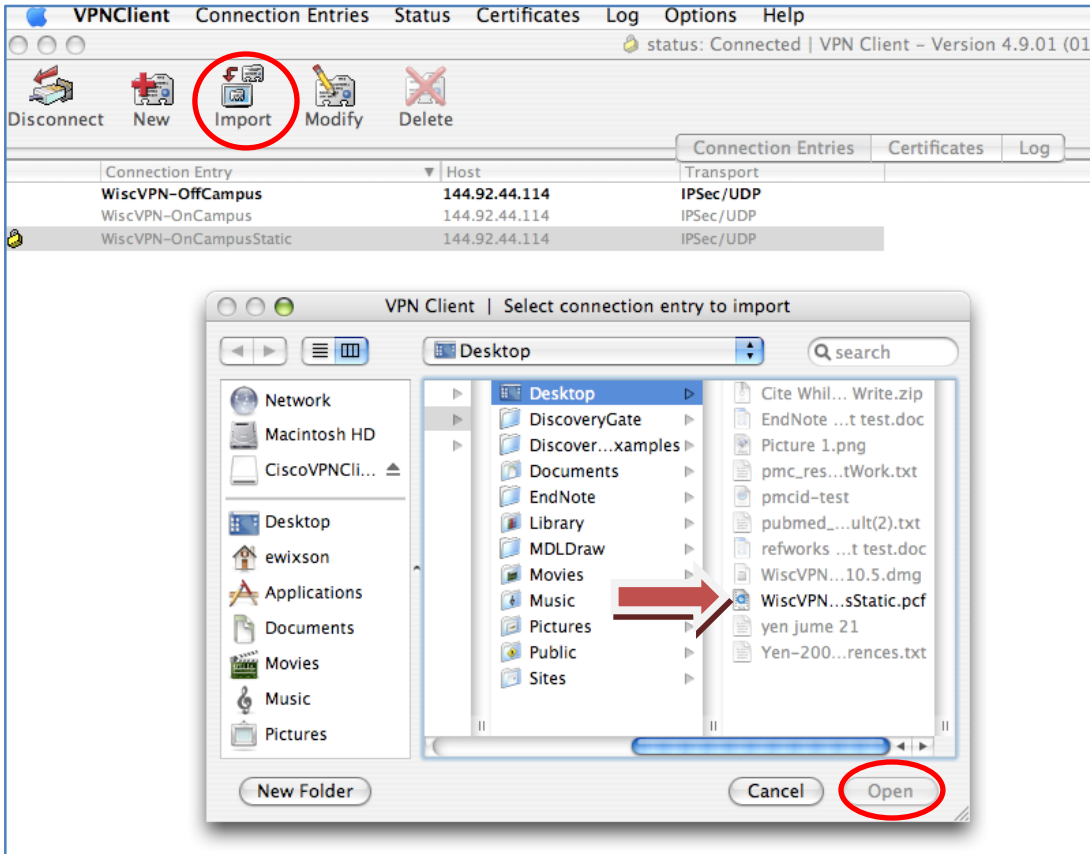
3. Locate **WiscVPN-OnCampusStatic.pcf**, the on-campus static profile, at the DoIT web site: <https://doit.wisc.edu/network/vpn/>
4. Click on the **WiscVPN-OnCampusStatic.pcf** link on this web site.



5. (Windows): **SAVE TO DISK**
 - Save **WiscVPN-OnCampusStatic.pcf** to **C:\Program Files\Cisco Systems\VPN Client\Profiles**
C:\ProgramFiles\Cisco Systems\VPN Client\profiles directory should now contain **three** files:

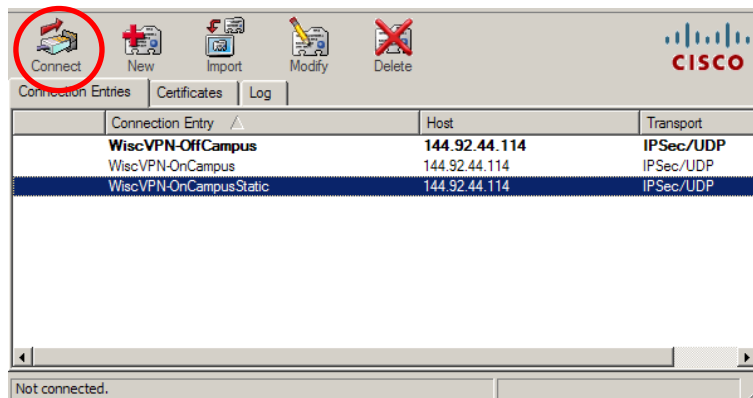


5. (MacIntosh): **Save File** to desktop.
 - Open VPN Client from **Applications** folder.
 - Click **IMPORT**.
 - Select WiscVPN-OnCampusStatic.pcf on the desktop.
 - Click **OPEN**.

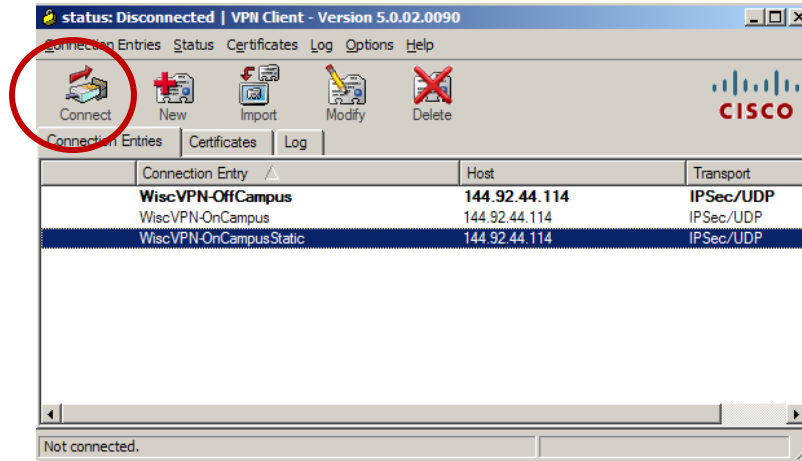


6. Launch WiscVPN from the **START menu** or desktop **icon** (Windows) or **Applications folder VPN icon** (Macintosh)

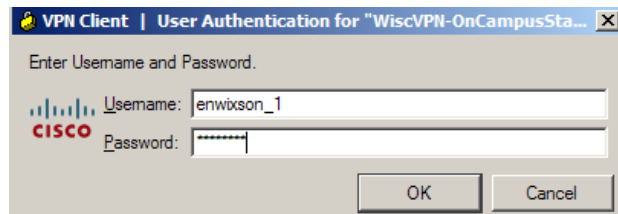
8. Click on **WiscVPN-OnCampusStatic**.



9. Click **CONNECT**.



10. Enter your **STATIC VPN LOGIN** and your **NetID PASSWORD**, then click **OK**.



11. Launch **SciFinder Scholar** from off-campus.